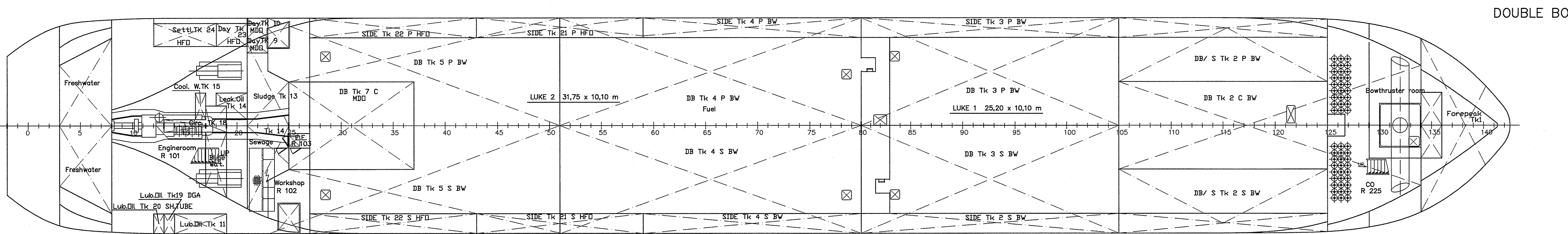
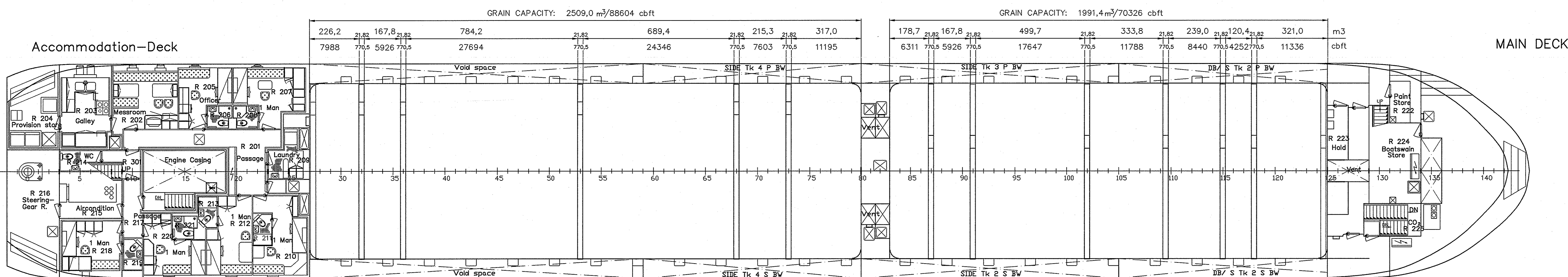
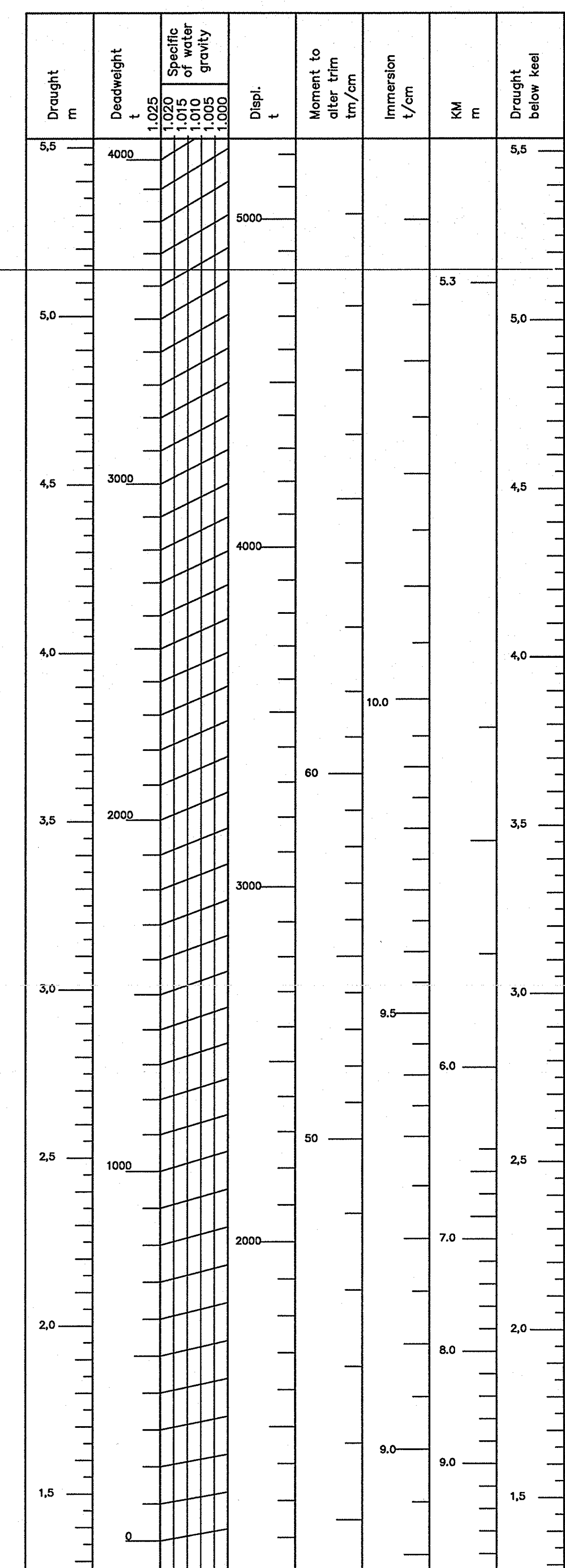


LOADING SCALE



MAIN DIMENSIONS

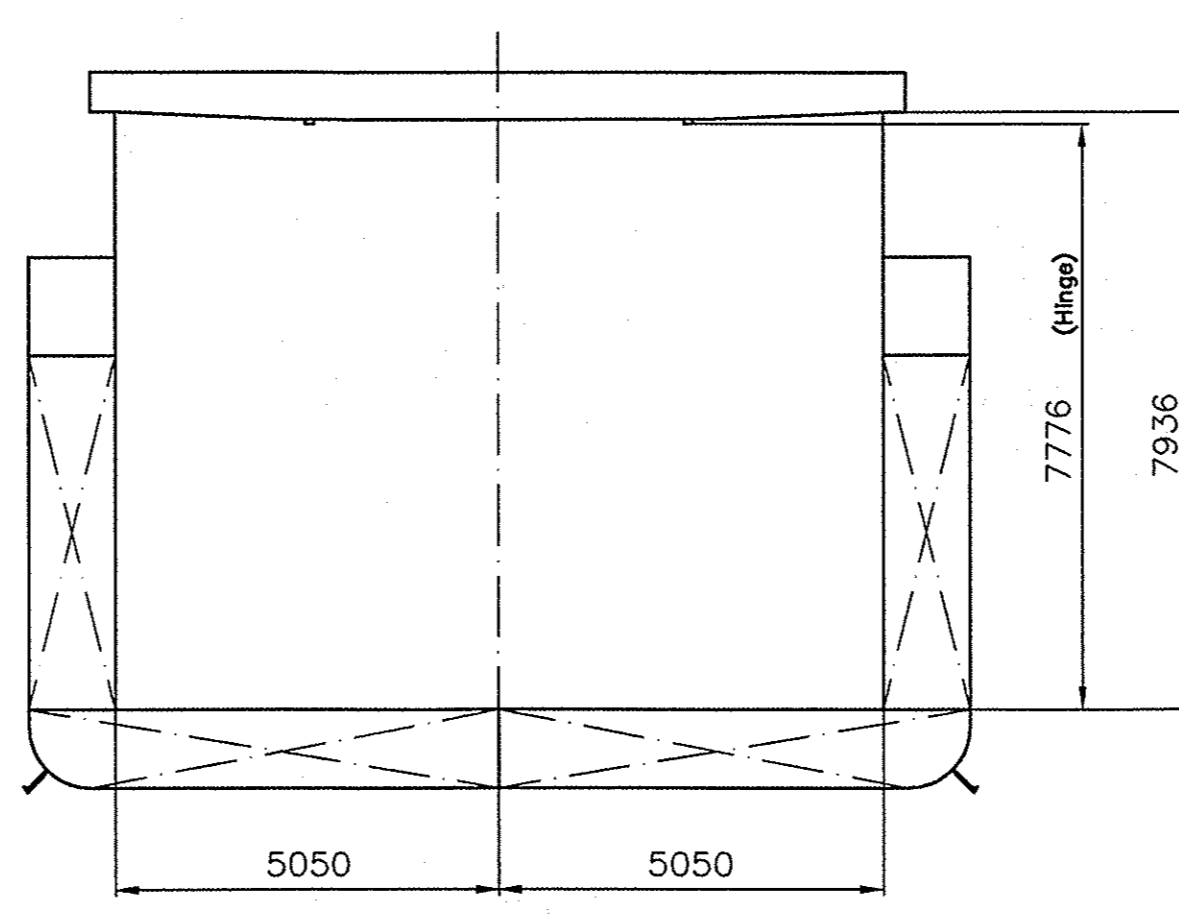
Length overall	88,30 m
Length between perp.	84,60 m
Breadth mid	12,40 m
Depth main, deck	6,70 m
Draught (design)	5,10 m
Breadth overall	13,01 m
Gross tonnage	2451
Net tonnage	1033
Hatch 1	25,2 x 10,1 x 7,26 m
Hatch 2	31,75 x 10,1 x 7,26 m
Hold capacity (max)	
Hold 1	1998 m ³
Hold 2	2517 m ³
Total	4515 m ³
Containers on deck (hatch 2)	20 TEU
Speed	10,5 kn

Permissible load on hatch covers : 15,7 kN/m² = 1,6 t/m²

Max. stackload on hatchcover 20' cont. | 40' cont.
25 t | 32 t

Permissible load on double bottom : 147,1 kN/m² = 15 t/m²

Coils loading
The following coil-bales are possible :
25 t Coils: D=1,80 m, L=1,30 m, 7 pcs/St = 175 t
or 35 t Coils: D=2,30 m, L=1,85 m, 6 pcs/St = 210 t
or 45 t Coils: D=2,40 m, L=2,00 m, 5 pcs/St = 225 t



Pos Nr.	Name of item	Frames	Volume (m ³)	Spec. grav (t/m ³)	Weight (t)	LCG (m)	VCG (m)
1	FOREPEAK TK1	BW 134-before	111,50	1,025	114,25	81,94	3,70
2	DB TK2	BW 105-134	150,87	1,025	154,64	73,75	0,93
3	DB/S TK2P	BW 105-125	113,80	1,025	116,64	68,59	2,70
4	DB/S TK2S	BW 105-125	113,80	1,025	116,64	68,59	2,70
5	SIDE TK3P	BW 80-105	95,39	1,025	97,78	55,38	3,85
6	SIDE TK3S	BW 80-105	95,39	1,025	97,78	55,38	3,85
7	DB TK3P	BW 80-105	88,70	1,025	90,91	55,38	0,51
8	DB TK3S	BW 80-105	88,70	1,025	90,91	55,38	0,51
9	SIDE TK4P	BW 59-80	80,62	1,025	82,64	41,48	3,85
10	SIDE TK4S	BW 59-80	80,62	1,025	82,64	41,48	3,85
11	DB TK4P	BW 51-80	103,63	1,025	106,22	39,27	0,51
12	DB TK4S	BW 51-80	103,63	1,025	106,22	39,27	0,51
13	DB TK5P	BW 23-51	74,94	1,025	76,81	23,81	0,51
14	DB TK5S	BW 23-51	75,71	1,025	77,57	23,71	0,51
15	FRESH WATER TK16P	FW 3 - 8	17,05	1,000	17,05	3,46	3,66
16	FRESH WATER TK16S	FW 3 - 8	17,05	1,000	17,05	3,46	3,66
17	DB TK7C	MDO 25-37	35,56	0,900	32,01	19,60	0,50
18	DAY TK9P	MDO 21-23	2,75	0,900	2,47	13,20	3,71
19	DAY TK10P	MDO 21-23	3,52	0,900	3,16	13,21	3,77
20	LEAK TK14P	MDO 18-21	2,20	0,900	1,98	11,82	0,50
21	EMERG.FOR NDG TK17P	MDO 9-10,25	0,74	0,900	0,67	5,77	9,50
22	SIDE TK21P	HFO 43-59	39,76	0,990	39,36	30,60	2,84
23	SIDE TK21S	HFO 43-59	39,76	0,990	39,36	30,60	2,84
24	SIDE TK22P	HFO 27-43	39,66	0,990	39,26	21,01	2,84
25	SIDE TK22S	HFO 27-43	39,66	0,990	39,26	21,01	2,84
26	DAY TK23P	HFO 18-21	4,63	0,990	4,58	11,71	4,14
27	SETTL TK24P	HFO 12-18	6,71	0,990	6,64	9,12	4,38
28	SLUDGE TK13P	LO 21-25	8,62	0,901	7,77	13,66	0,51
29	LUBR.OIL TK11S	LO 14-19	5,99	1,000	5,40	10,01	4,14
30	CIRC.TK18C	LO 13-19	2,19	0,901	1,97	9,99	0,51
31	LUB.OIL TK19S	LO 13-14	0,93	0,901	0,84	8,10	4,35
32	SH TUBE TK20S	LO 12-13	0,85	0,901	0,77	7,50	4,41
33	SEWAGE TK12S	MISC 21-25	8,62	1,000	8,62	13,66	0,51
34	BILGE TK25S	MISC 16-18	3,00	1,025	3,08	10,23	0,54
35	COOL TK15P	MISC 16-17	0,88	0,901	0,88	9,90	0,50

CLASS
GL 100 A5 "E" "G" MC "E" AUT
Equipped for Carriage of Containers
Equipped for dangerous goods (only on hatch 2)