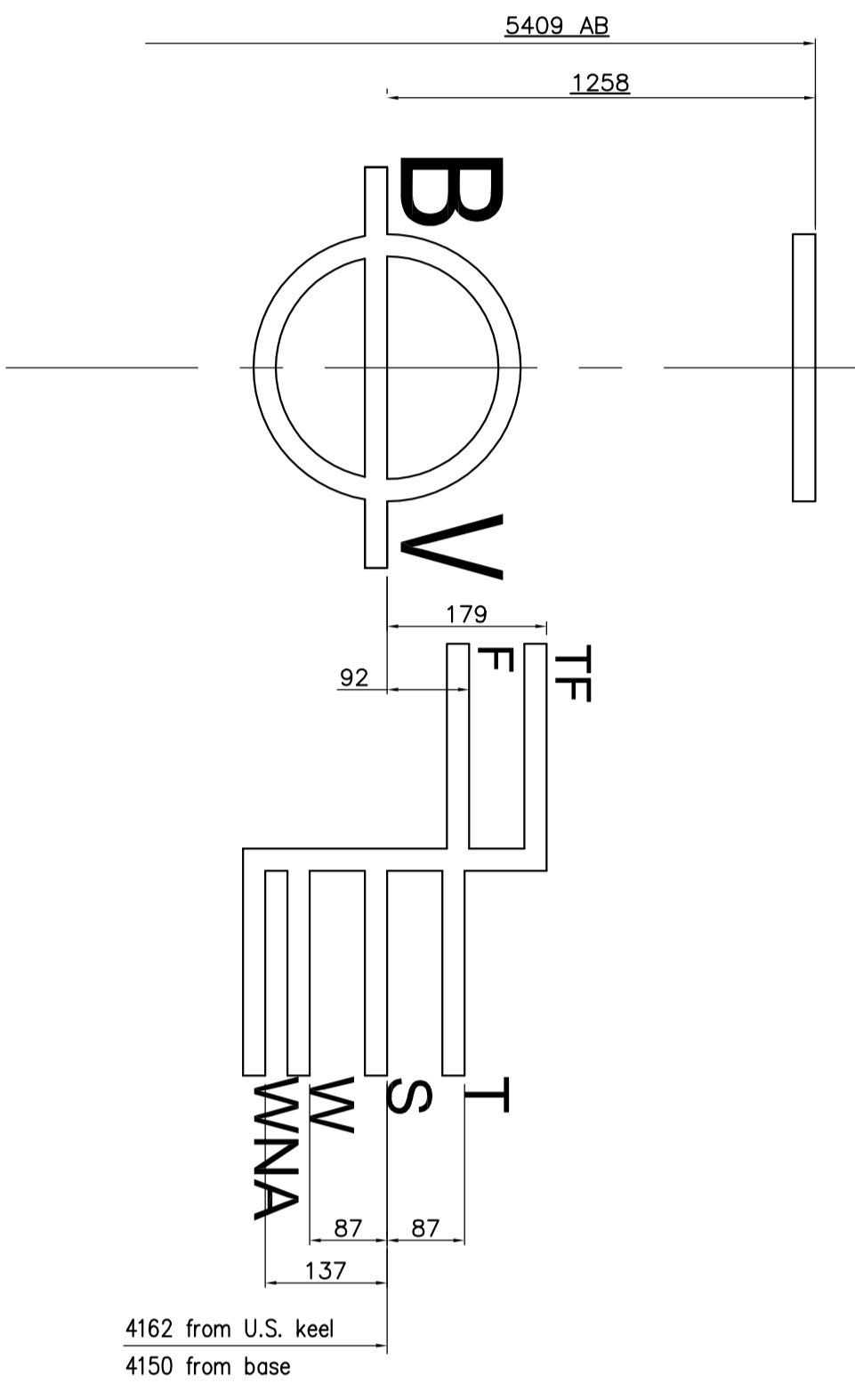
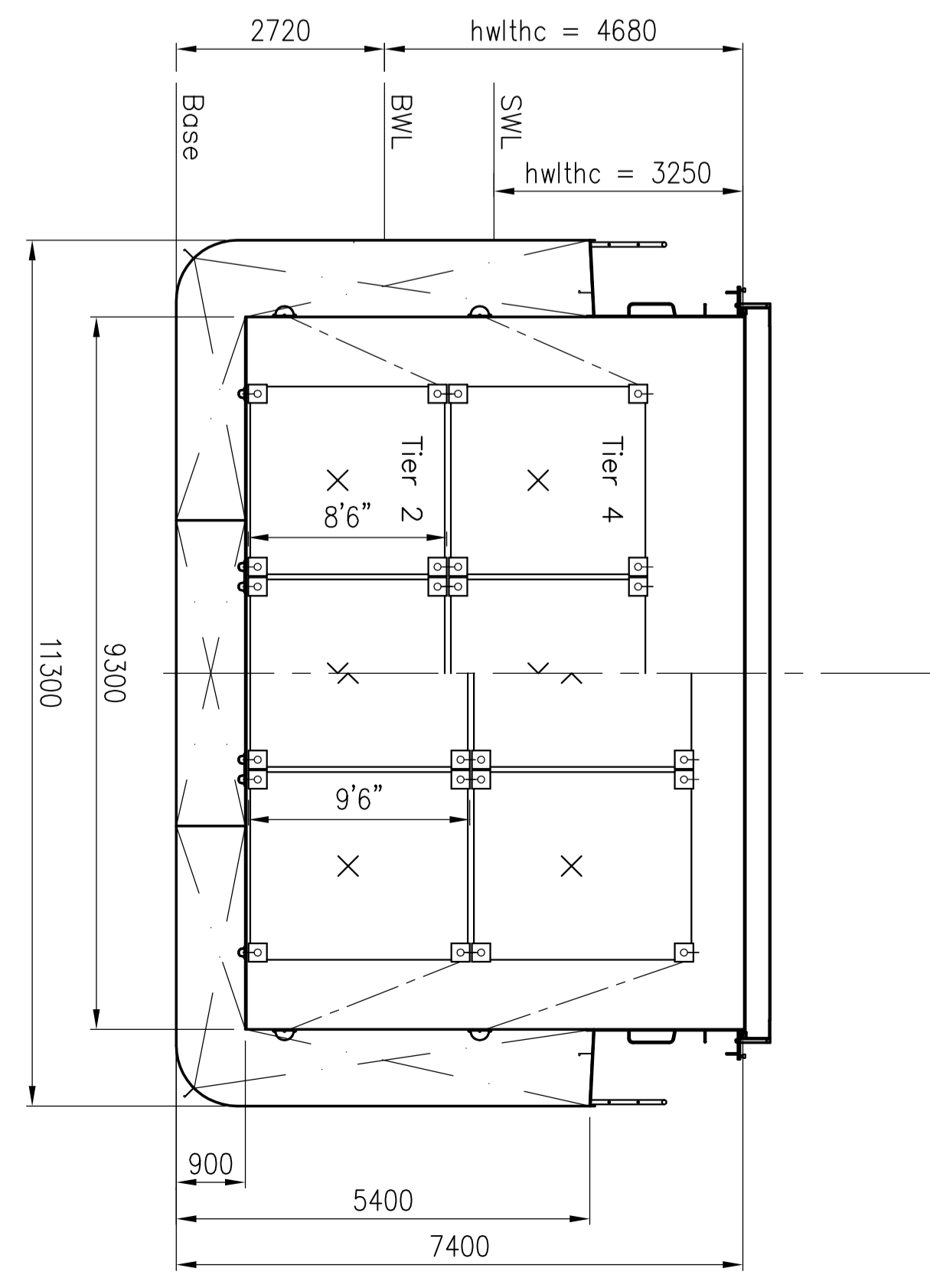
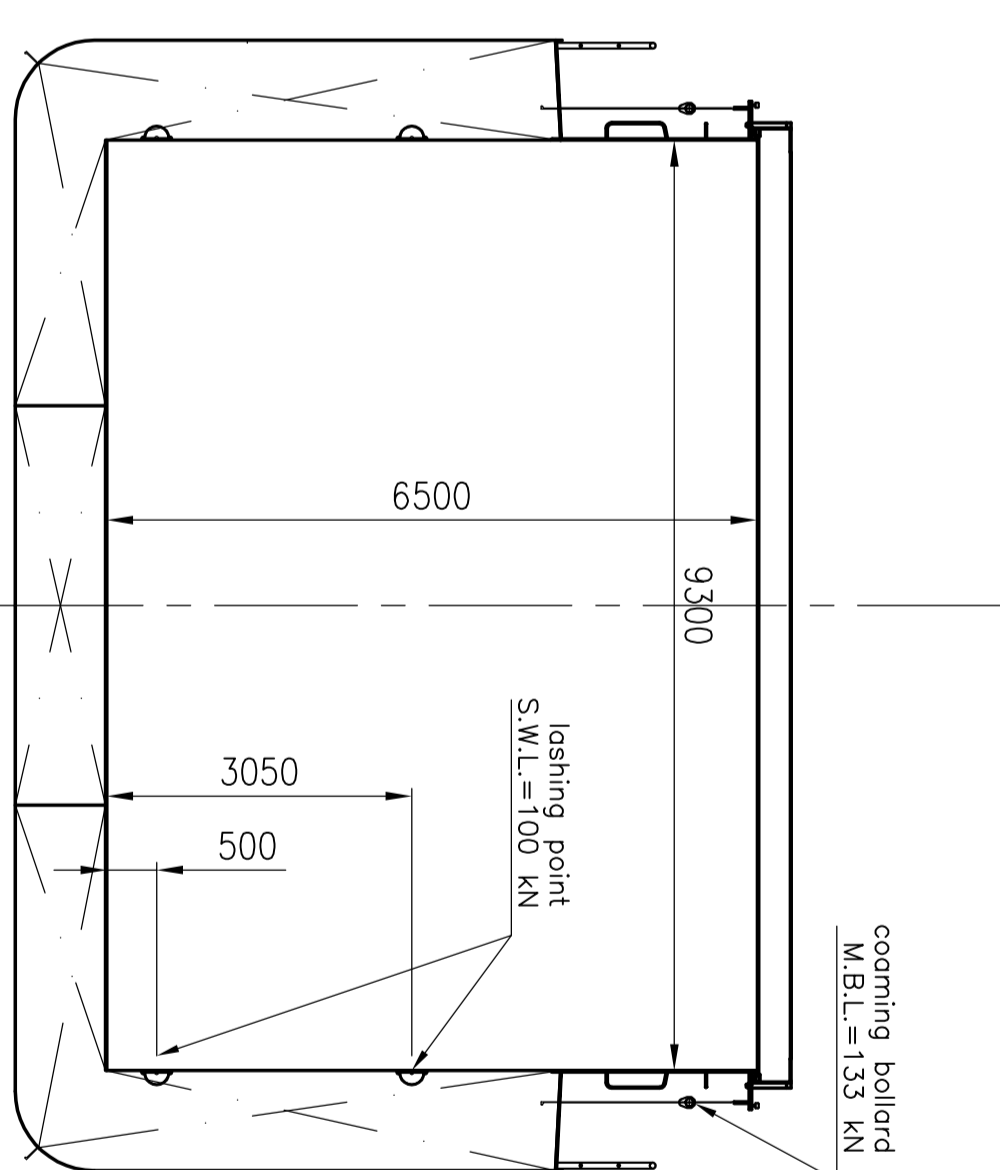


# DEADWEIGHT SCALE

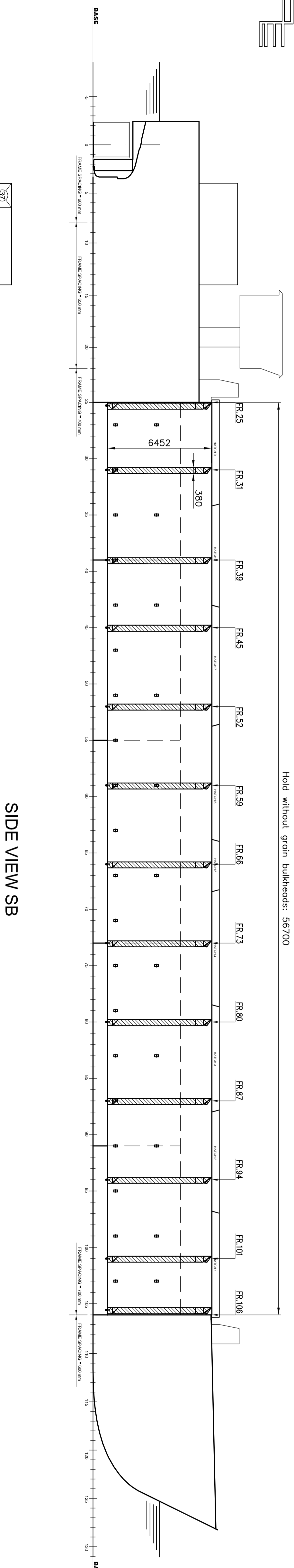
cm	Draught above bottom of keel	t	DEADWEIGHT	t/cm	tonnes per 1 cm of immersion	m	cm	Draught above bottom of keel																						
	DEADWEIGHT		Moment to change trim 1 cm						Initial metacentre above B.L.																					
	gam																													
cm	1.025 t/m <sup>3</sup>	1.020 t/m <sup>3</sup>	1.015 t/m <sup>3</sup>	1.010 t/m <sup>3</sup>	1.005 t/m <sup>3</sup>	1.000 t/m <sup>3</sup>	4.923	4.60																						
									gam	1.025 t/m <sup>3</sup>	1.020 t/m <sup>3</sup>	1.015 t/m <sup>3</sup>	1.010 t/m <sup>3</sup>	1.005 t/m <sup>3</sup>	1.000 t/m <sup>3</sup>															
																gam	1.020 t/m <sup>3</sup>	1.015 t/m <sup>3</sup>	1.010 t/m <sup>3</sup>	1.005 t/m <sup>3</sup>	1.000 t/m <sup>3</sup>									
																						gam	1.015 t/m <sup>3</sup>	1.010 t/m <sup>3</sup>	1.005 t/m <sup>3</sup>	1.000 t/m <sup>3</sup>				
																											gam	1.010 t/m <sup>3</sup>	1.005 t/m <sup>3</sup>	1.000 t/m <sup>3</sup>
BOY FLE																														



DRAFT		from U.S. keel	
TROPICAL FRESH	TF	4.341	
FRESH	F	4.254	
TROPICAL	T		4.249
SUMMER	S		4.162
WINTER	W		4.075
WINTER N.A.	WNA		4.025

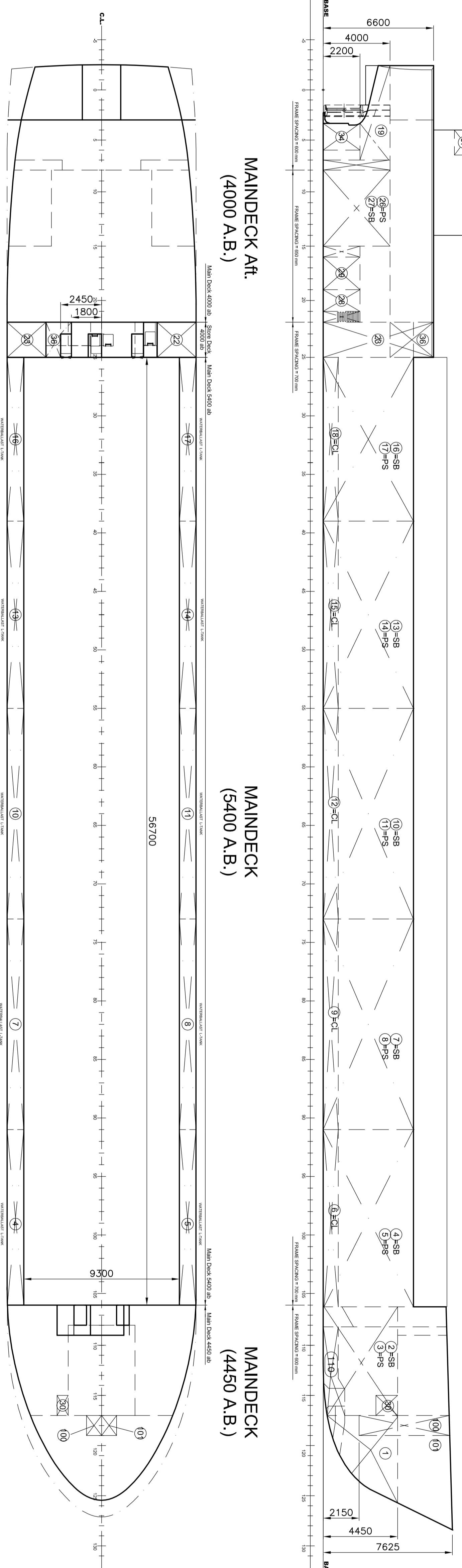


## POSITIONS GRAIN BULKHEADS



## SIDE VIEW SB

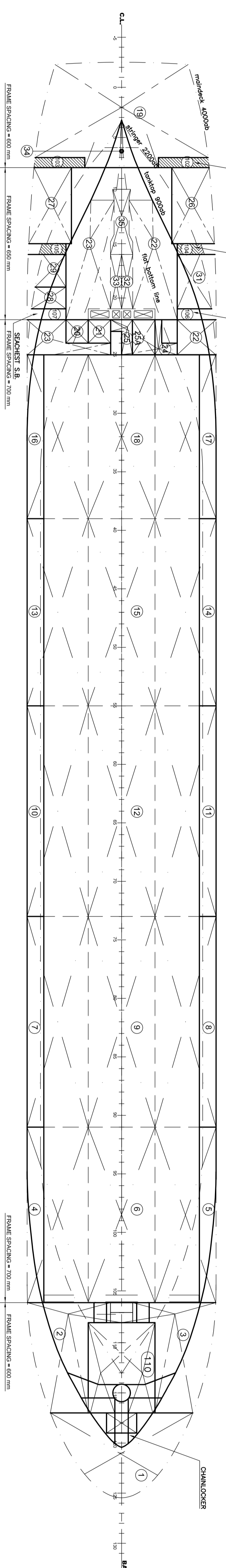
## MAINDECK Aft (4000 A.B.)



## MAINDECK (5400 A.B.)

## MAINDECK (4450 A.B.)

## ENGINEER ROOM (900 A.B.)



## TANKTOP (900 A.B.)

WATERBALLAST TANKS	Volume m <sup>3</sup>
1. W/B Fore Peak I	52.19
2. W/B Fore Peak II	2.95
3. W/B Fore Peak III	2.95
4. W/B DB/WTG IK	68.917
5. W/B DB/WTG IK	72.997
6. W/B DB IK	36.561
7. W/B DB/WTG IK	94.793
8. W/B DB IK	94.793
9. W/B DB/WTG IK	44.341
10. W/B DB/WTG IK	94.793
11. W/B DB/WTG IK	94.793
12. W/B DB IK	44.341
13. W/B DB/WTG IK	94.793
14. W/B DB/WTG IK	94.793
15. W/B DB IK	39.414
16. W/B DB/WTG IK	71.535
17. W/B DB/WTG IK	34.489
18. W/B DB IK	51.461
19. W/B Aft Peak IK	1279.526
Subtotal	

FUEL TANKS	Volume m <sup>3</sup>
20. MDO Day K	2.95
21. MDO Day K	3.58
22. MDO Day K	42.338
23. MDO Bunker IK	50.228
24. GO Bunker IK	18.075
25. GO Day K.1	2.566
26. GO Day K.2	4.434
27. FO K Bow/Tr	1.270
28. FO K Bow/Tr	5.841
29. GO Em. Can. IK	0.700
Subtotal	136.926

VARIOUS TANKS	Volume m <sup>3</sup>
30. L.O.K	3.99
31. Slop K	2.46
32. Slop K	14.189
33. Slop K	14.189
34. DB Bilge/Sludge	1.906
35. DB Dirty Oil IK	1.906
36. Shaft cooling IK	1.804
37. Sump tank	2.102
Subtotal	19.958

FRESHWATER TANKS	Volume m <sup>3</sup>
26. FW K	14.189
27. FW K	14.189
Subtotal	28.377

## PRINCIPAL DIMENSIONS CC2500

Length o.a.:	87.50 m
L bpp:	84.30 m
B moulded:	11.30 m
Depth to main deck:	5.40 m
Draft, ballast:	2.72 m
Draft, max:	4.15 m
Deadweight - Tropical fresh:	2654 ton
- Fresh:	2573 ton
- Tropical:	2654 ton
- Summer:	2572 ton
- Winter:	2490 ton
- Winter N.A.:	2442 ton

Gross Tonnage: 1767  
 Net Tonnage: 927  
 Class Notation: Bureau Veritas, I\*Hull,  
 \*Mach, General Cargo Ship,  
 \*AUT-UMS, STRENGTH-BOTTOM,  
 Heavy cargo (118kNm<sup>2</sup>)

Ship's name: ANITA  
 IMO Number: 9479577  
 Call sign: PBAV  
 Flag: DUTCH  
 Homeport: ROTTERDAM

MAXIMUM STACKLOAD	20 ft. 40 ton
HOLD	40 ft. 50 ton

WEIGHT GRAIN BULKHEADS	8.6 ton
EACH	

CONTAINER CAPACITY	27 TEU
TIER 2	
TIER 4	27 TEU

LOADING CAPACITY	12 ton/m <sup>2</sup>
HOLD	
HATCHES	1.6 ton/m <sup>2</sup>

HOLD CAPACITY	121058 cuft / 3428 m <sup>3</sup>
VOLUME	

MACHINERY (PROPULSION)  
 MAIN ENGINE: ABC 6MDZC 1104 kW/800 rpm  
 BOWTHRUSTER: 257 kW  
 TRAL SPEED: 11.5 knots

DAMEN DAMEN SHIPYARDS BELGIUM	
2015-11-16	
Hull no. 2015-11-16	
Drawing no. 9380-110-150	
SCALE: 1:50	PROJECT: ALL PROJECTION
DRAWN: DSB/WW	CHECKED: DSB/WW
DESIGNED: DSB/WW	APPROVED: DSB/WW
CAPACITY PLAN	
MV "ANITA"	
TYPE: CC2500	DESIGNED DRAWING: 9380-110-150
COMP. NO. 9380	SHEET NO. 1
SECT. NO. 9380	REVISION: A