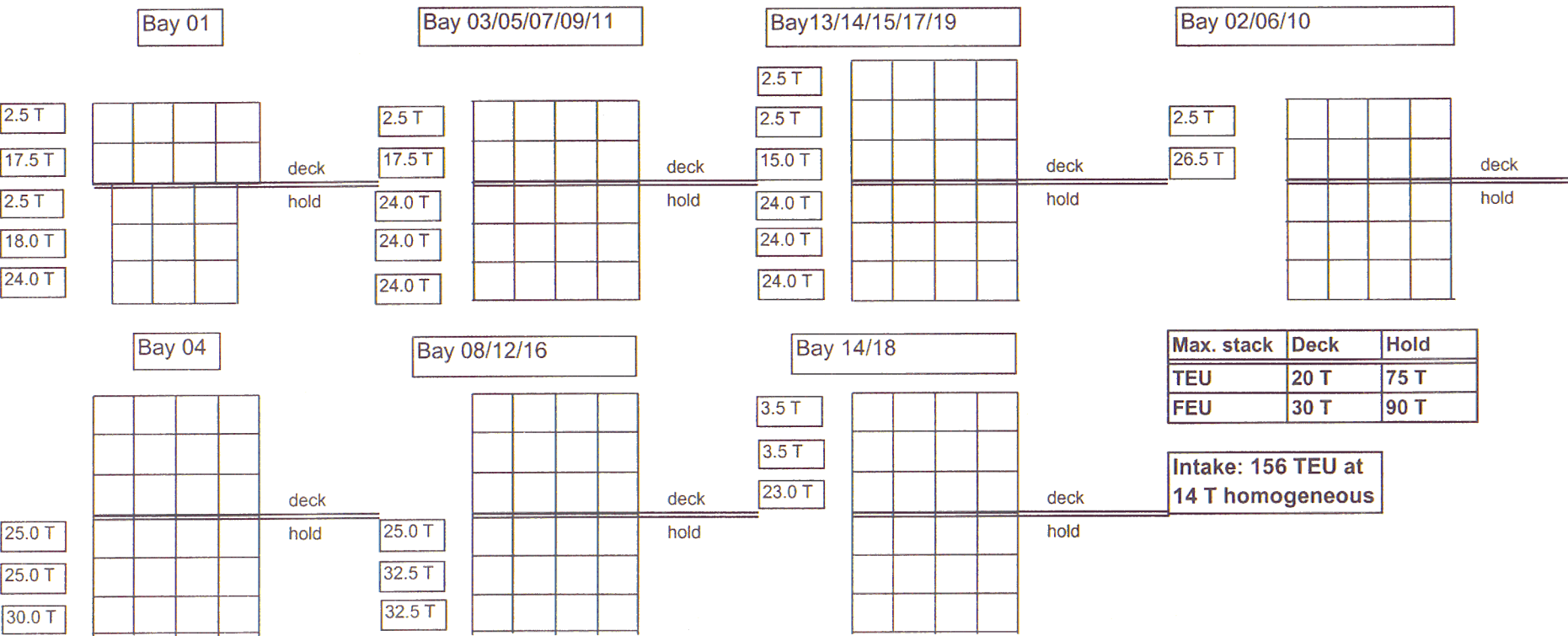


# Container arrangement mv "Oslo" / "Tallin" / "Helsinki" / "Riga" / "Kopenhagen"

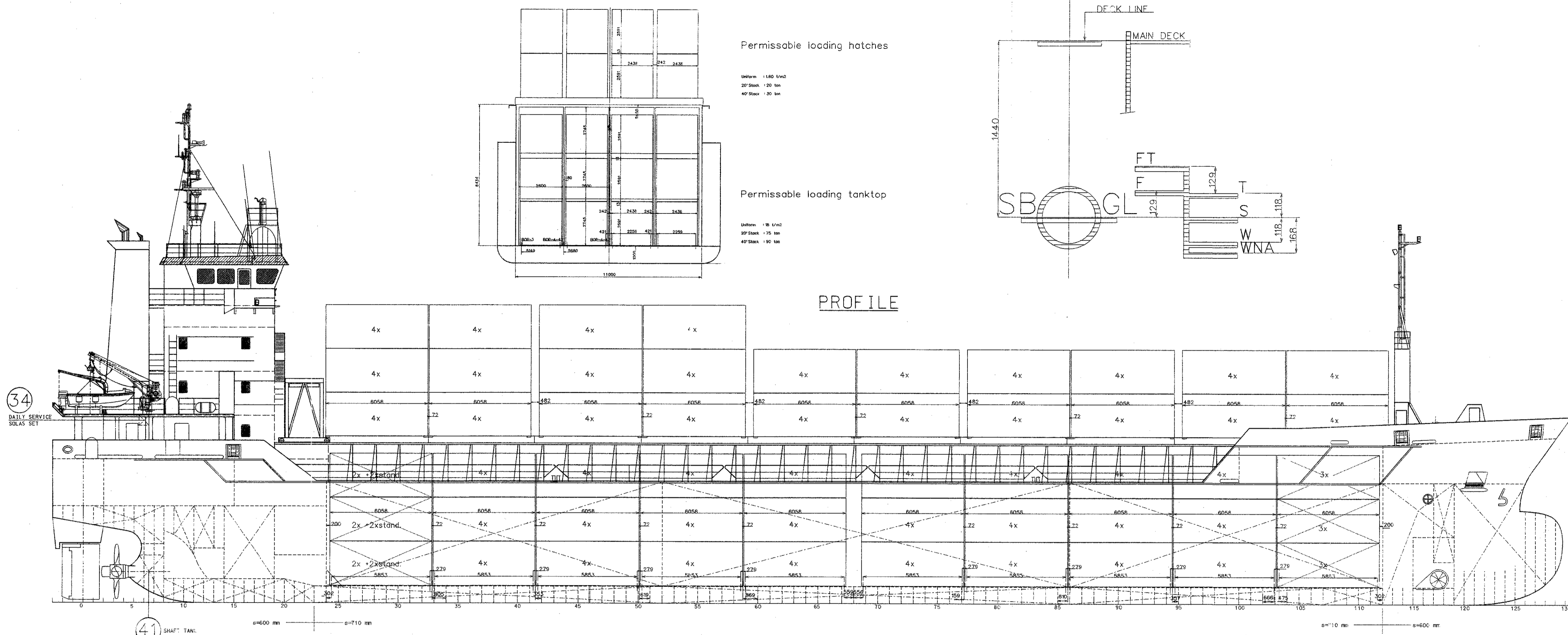
	Aftship					Foreship							
	(19)	(17)	(15)	(13)	(11)	(09)	(07)	(05)	(03)	(01)			
DECK	12	12	12	12	8	8	8	8	8	8	TEU:	96	
	12	12	12	8	8	8	8	8	8	FEU:	48		
HOLD	(18)	(14)	(10)	(06)	(02)							TEU:	117
	(19)	(17)	(15)	(13)	(11)	(09)	(07)	(05)	(03)	(01)			
	12	12	12	12	12	12	12	12	12	9	FEU (TEU):	48 (21)	
	(12)	12	12	12	12	12	12	12	(9)				
	(16)	(12)	(08)	(04)							TEU:	213	
										FEU (TEU):	96 (21)		

## Weight distribution in the stacks

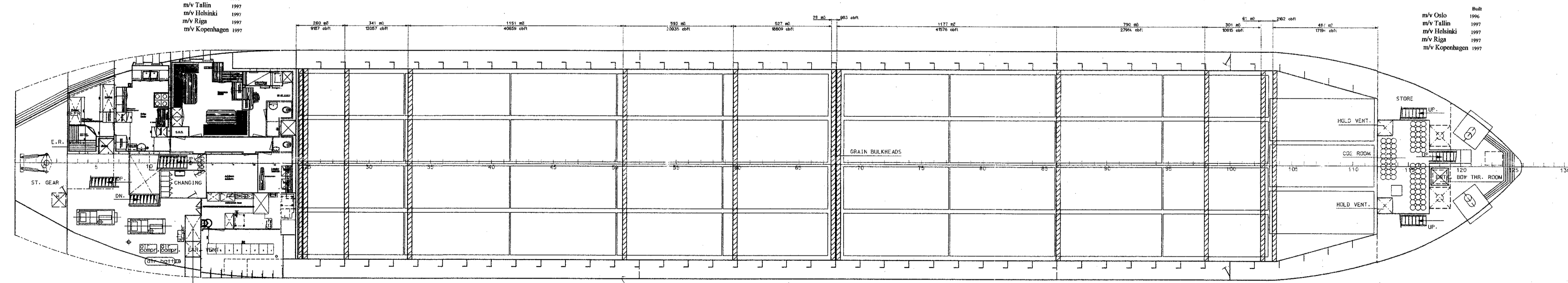


Note: Vessel's container intake is always subject to vessel's stackweight/deadweight/stability and permissible stress

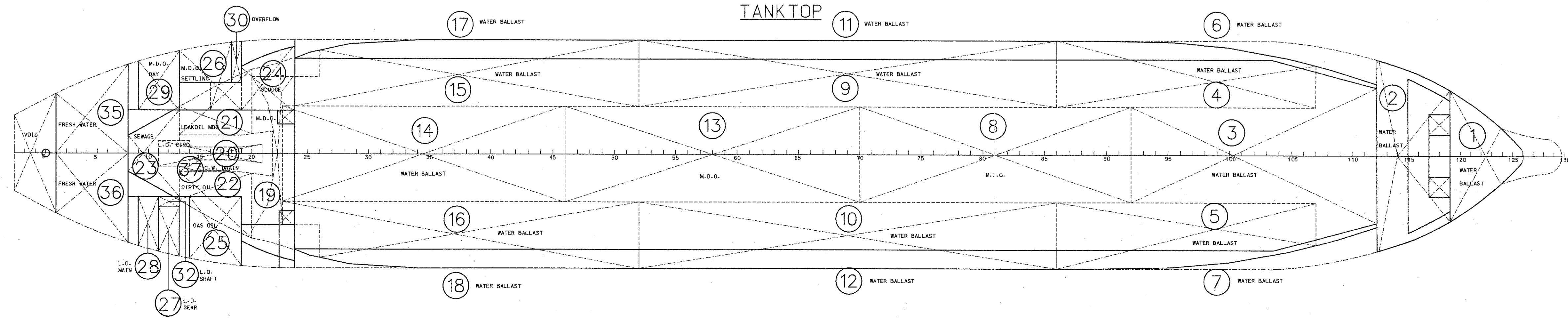
CROSS SECTION



MAINDECK



TANK TOP



**PRINCIPAL PARTICULARS**

Length over all	89.77 M
Length between perpend.	84.99 M
Breadth moulded	13.17 M
Depth to maindeck	7.15 M
Draught max. summer u.s.k.	5.719 M
Deadweight excl. grainbulkheads	4245 T
Gross tonnage	2810 GT
Net tonnage	1570 GT
Hatch	62.48 x 11.00 m
Hold capacity	5718 m <sup>3</sup> / 201920 cbft
Containers in hold	117 TEU
Containers on hatches	96 TEU
Containers total	213 TEU

G.L. +100 A5 E G  
G.L. + MC E AUT  
Equipped for carriage of containers and dangerous cargoes  
Strengthened for heavy cargoes

<b>DAMEN SHIPYARD'S HOOGEZAND</b>			
Scheepwerfsweg 13 PO Box 79 5600AB Hoogezand, HOLLAND Tel: 0598-390022 Fax: 0598-394863			
SCALE 1:100	OWNER BUDEN	DATE 10-01-97	
DRAWN BY B. GROOT	YARD N° 716		
APPROVED	TITLE		
LOADING PLAN OSLO			
ALTERATION			
			No. 0716 100-090